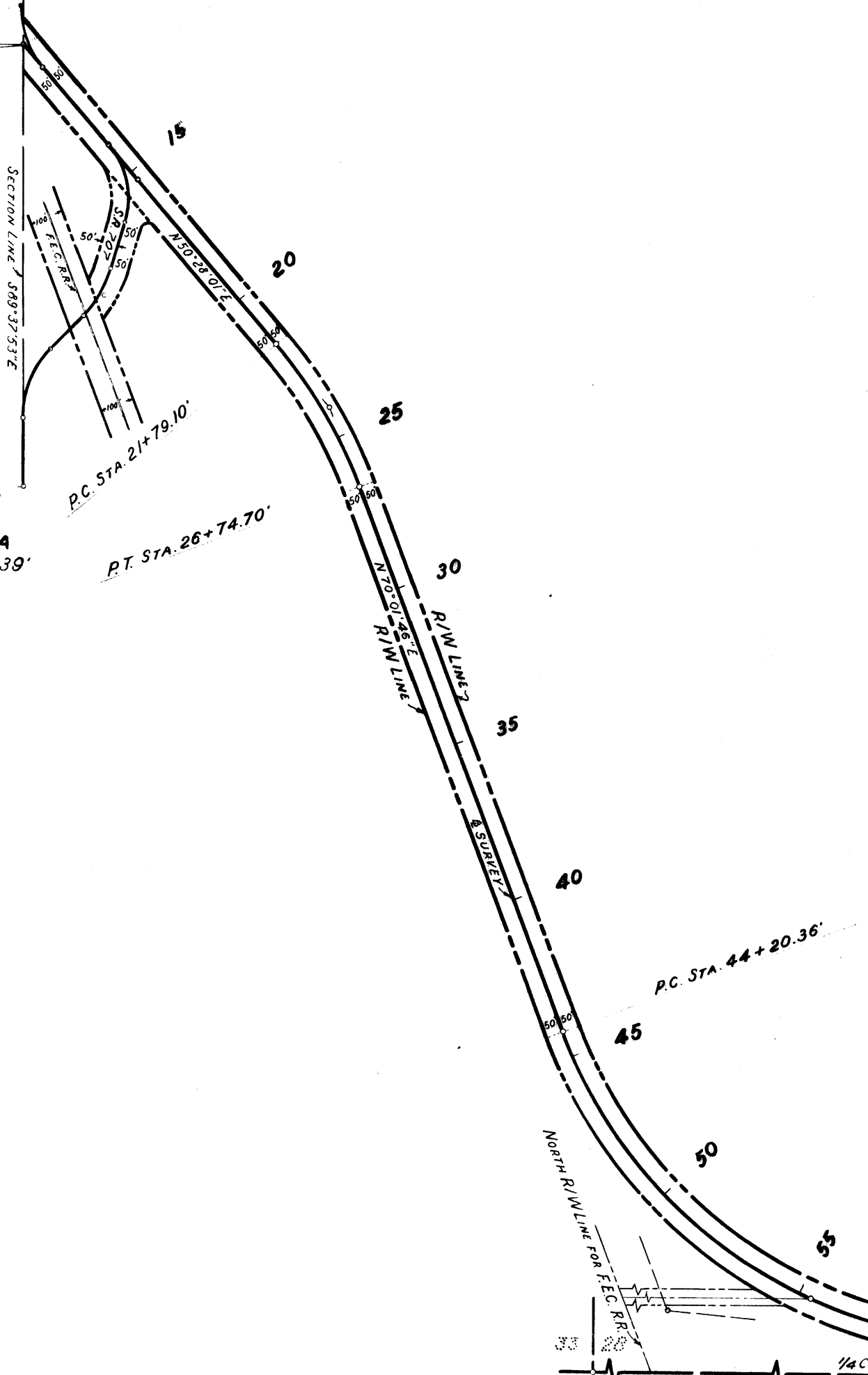


FED. ROAD DIV. No.	STATE	PROJECT No.	FISCAL YEAR	SHEET No.
3	FLA.	89504-2601	'66	1

12 JAN 20 10:43
 ENGINEER
 DISTRICT ENGINEER

BEGIN SURVEY
 STA. 10+00.00'

CURVE DATA
 P.I. STA. 24+29.39'
 Δ = 19°33'45"
 D = 03°56'50"
 R = 1451.84'
 T = 250.29'
 L = 495.60'

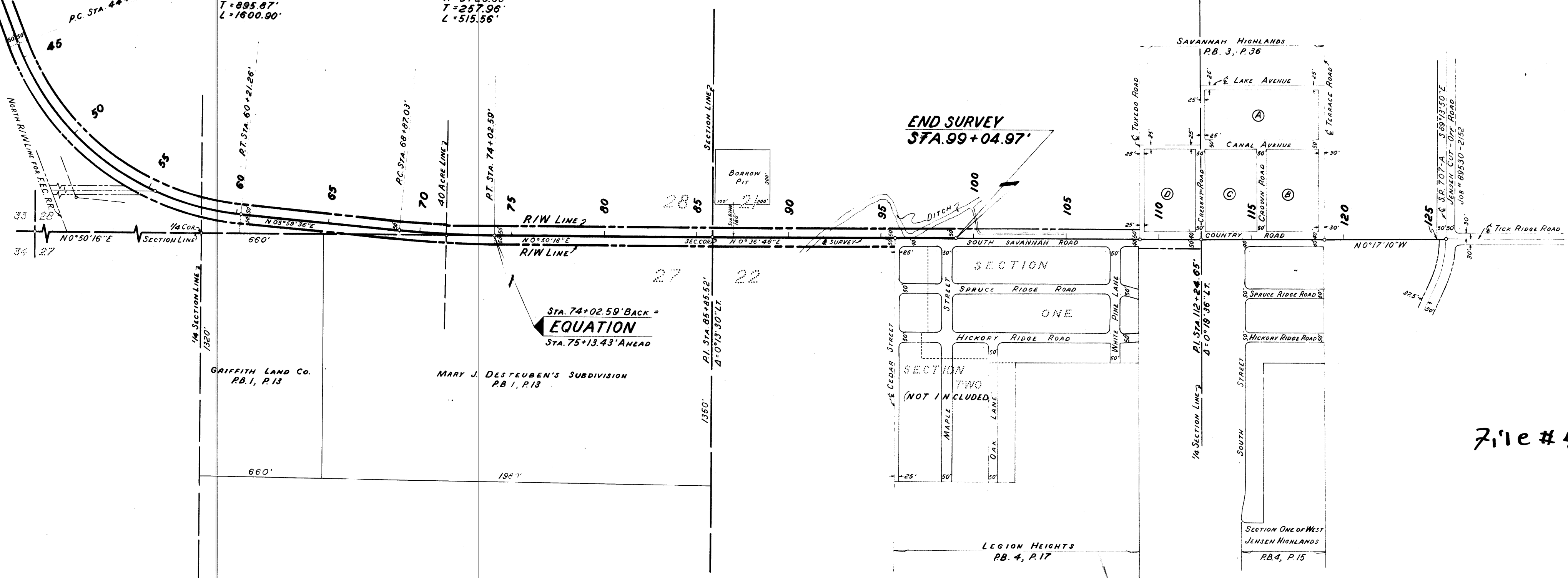


CURVE DATA
 P.I. STA. 53+16.23'
 Δ = 04°02'10"
 D = 04°00'00"
 R = 1432.69'
 T = 895.87'
 L = 1600.90'

CURVE DATA
 P.I. STA. 71+44.99'
 Δ = 05°00'20"
 D = 01°00'00"
 R = 5729.65'
 T = 257.96'
 L = 515.56'

TWA 37, S. ROE 41 E
 SCALE: 1" = 400'

END SURVEY
 STA. 99+04.97'



Sta. 74+02.59' BACK =
EQUATION
 Sta. 75+13.43' AHEAD

File # 431440

"This right-of-way map when recorded in Public Records of Martin County, Florida, this 22 day of JANUARY A.D. 1966, in Road Plat Book 3 Page 9

Louise V. Adams
 Clerk of Circuit Court
 By *Charlotte Buskey, Jr.*

NOTE!
 BEARINGS TAKEN FROM JOB #89530-2152.
 UTILITIES INVOLVED WITH JOB #89504-2601 ARE F.C. R.R., F.L.A. POWER & LIGHT CO., AND SOUTHERN BELL T & T CO.

SOUTH SAVANNAH ROAD
 STATE OF FLORIDA
 STATE ROAD DEPARTMENT

RIGHT OF WAY MAP

STATE ROAD NO. **S-723** **MARTIN COUNTY**

By	DATE	APPROVED BY	DATE
DRAWN	R. Wold 1-67	<i>Charles E. Davidson</i>	3/1/67
TRACED	R. Wold 1-67		
CHECKED	D. LADLEY 1-67		
COMPALED			
INDEXED			

ENGINEER OF RIGHTS OF WAY
Charles E. Davidson 3/1/67
 DISTRICT ENGINEER

SECTION. 89504-2601 SHEET 1 OF 3

REVISION	BY	DATE